

# Product Specifications

## mPro400GCD-M

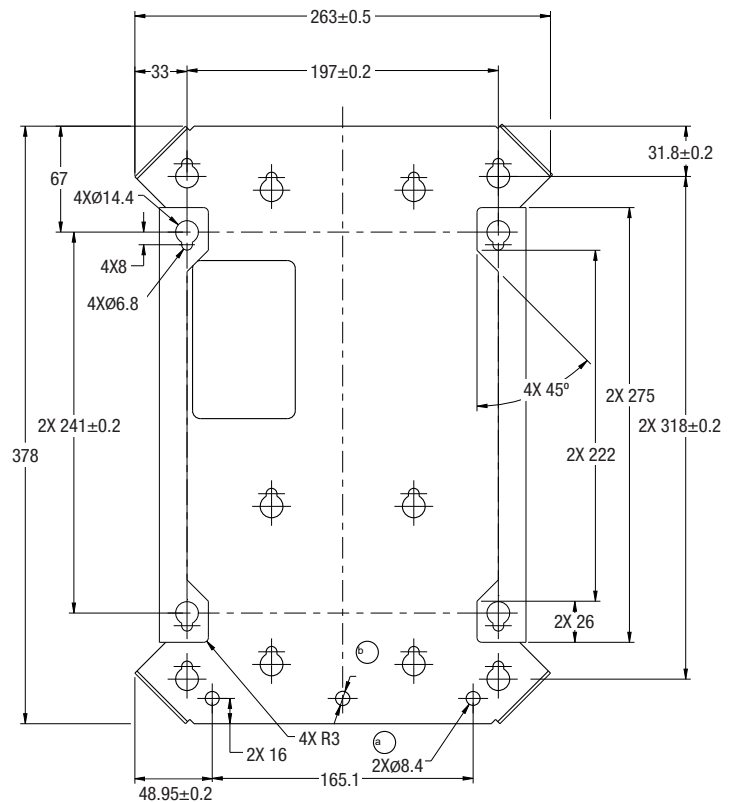
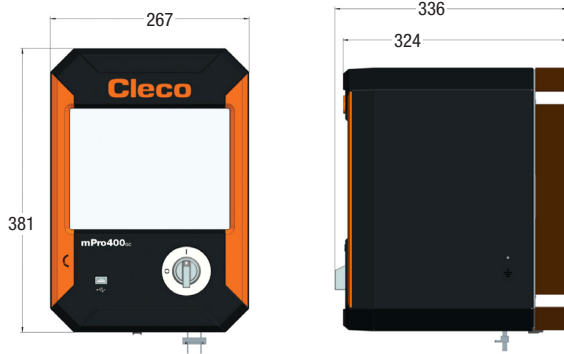
### Master

GLOBAL CONTROLLER

The mPro400 Series Controller delivers unmatched flexibility for assembly lines utilizing both corded and cordless tools. From simple to complex tightening requirements, the mPro400 allows for easy integration into any manufacturing environment.

## FEATURES

- **Flexible** - Supports a combination of up to 16 corded and cordless tools
- **Intuitive** - User-friendly 10.5" touch screen provides interactive operator guidance



## SPECIFICATIONS

### TOOL COMPATIBILITY

LiveWire, CellCore, CellTek, I-Wrench, Intelligent Spindles

### WEIGHT & DIMENSIONS

Weight	9.7 kg / 21.3 lb
Width	266.7 mm / 10.5in
Height	381 mm / 15 in
Depth	288 mm / 11.34 in



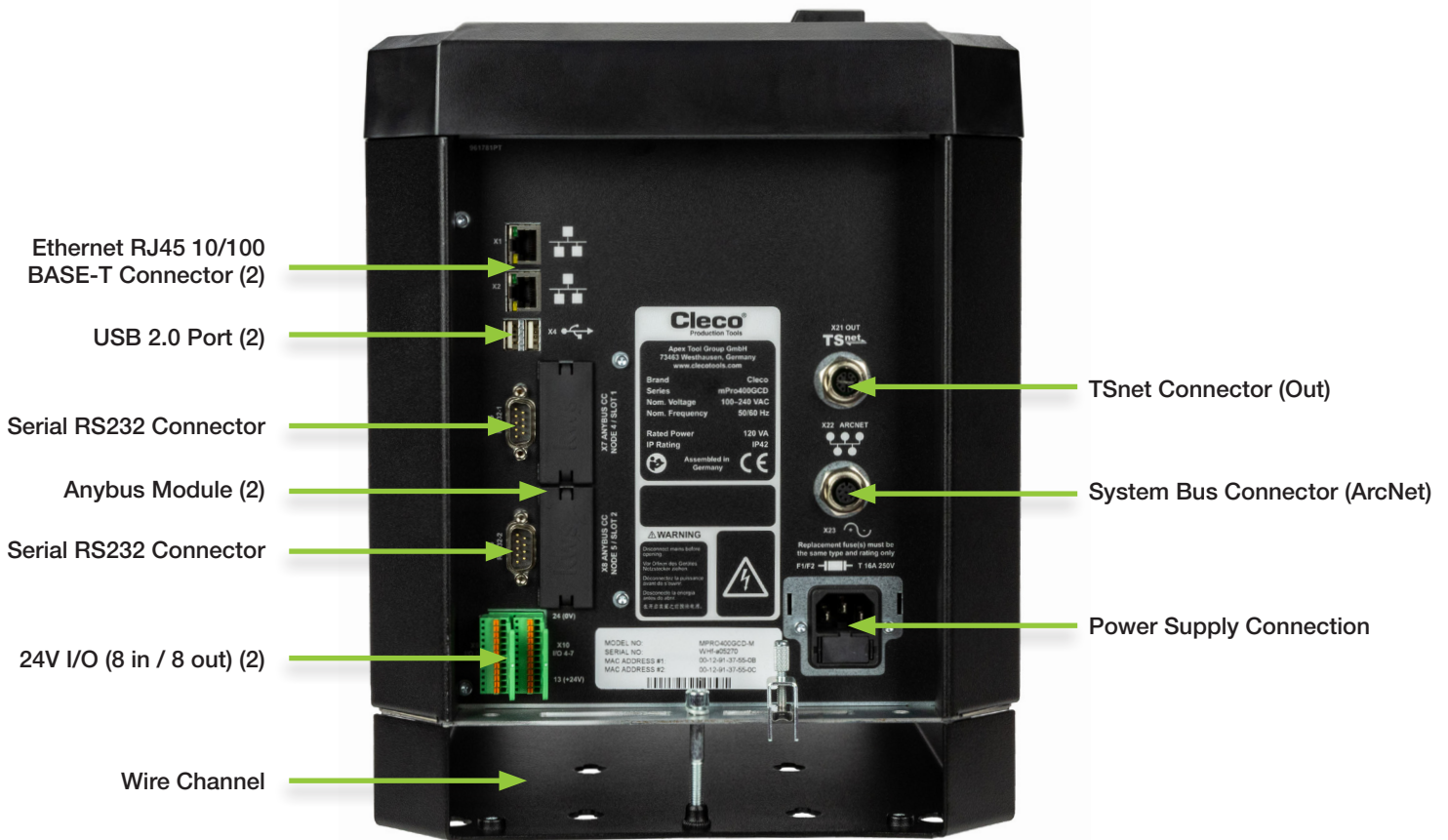
### INPUTS & OUTPUTS

2X Fieldbus	1X TSnet Input
2X Ethernet	1X TSnet Output
2X Serial RS-232	2X 24V I/O (8 in / 8 out)
3X USB	1X Power Input (Single Phase 100–240 VAC ±10%)
2X 24v I/O Connector	1X Compact Flash Card

# Product Specifications

## mPro400GCD-M Master

GLOBAL CONTROLLER



USB 2.0 Port Located on Front of Controller