

User's Manual

PL12-1097EN

03/29/2017

**Cleco**<sup>®</sup>  
TULMan<sup>™</sup>

Electronic Counter



For additional product information visit our website at <http://www.clecotools.com/tulman>



## Table of Contents

### Software User’s Instructions:

Cleco® TULMan™ Software Installation .....	4
Connect Cleco® TULMan™ using a micro USB cable .....	7
Cleco® TULMan™ Software Connection and Launch	
Starting the Program.....	7
Unlock a Mode.....	9
Password Mode .....	10
Tool Room Mode.....	10
Programming Mode .....	11
Quick Guide to Programming .....	12
File Download .....	12
Appendices .....	15
Appendix 1: Runtime Calculator .....	16
Appendix 2: Cycle Count Examples .....	17
Appendix 3: End User License Agreement.....	20

### Electronic Counter Instructions:

Safety .....	22
Personal Protective Equipment.....	22
Designated Use.....	22
Operating Condition .....	22
Battery .....	22
Product Description.....	22
Counter Assembly .....	22
Tool Integration.....	22
Connect to Computer .....	23
Battery Replacement.....	23

### Copyright Protection:

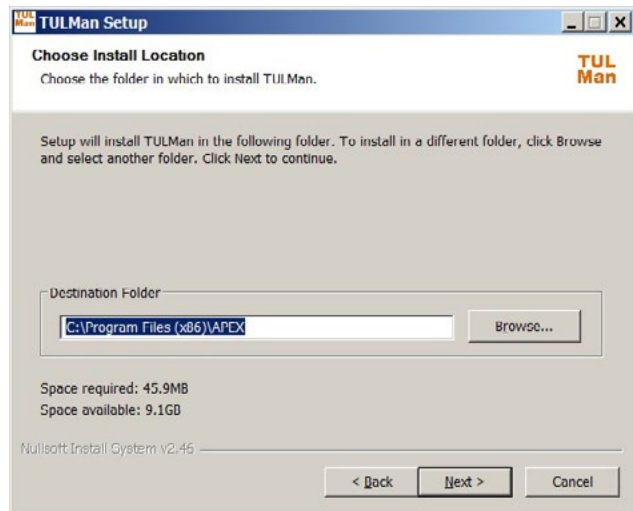
Apex Tool Group, LLC or Apex Tool Group GmbH reserves the right to modify, supplement or improve this document or the product without prior notice. This document may not be reproduced in any way, shape or form, in full or parts thereof, or copied to another natural or machine readable language or to a data carrier, whether electronic, mechanical, optical or otherwise without the express permission of Apex Tool Group, LLC or Apex Tool Group GmbH.

### Cleco® TULMan™ Software Installation:

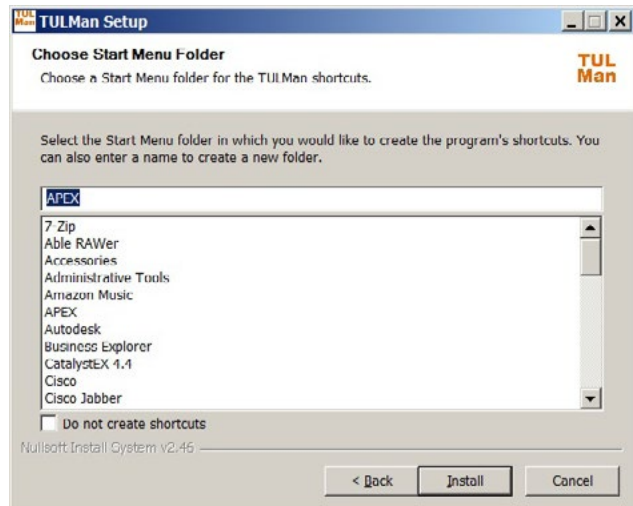
1. Free WEB download at <http://www.clecotools.com/tulman>
2. Launch the executable file and follow the on screen instructions: TULMan +Setup.exe  
Click "Next" to continue.



3. **Choose Install Location** screen  
Click "Next" to continue.



4. **Choose Start Menu Folder** screen  
Default start menu folder: APEX  
Click "Install" to continue.



## Software Installation

### 5. Installation Complete screen

Click “Next” to continue.

**NOTE: Required drivers to access the Cleco® TULMan™ product will also be installed, except installation of these drivers and follow the on screen instructions.**

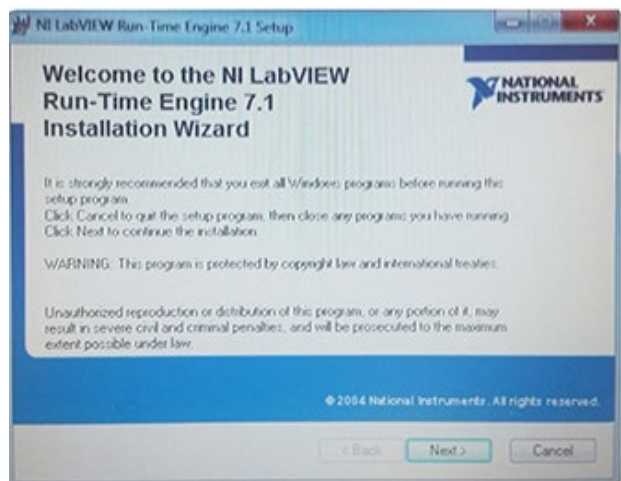
**Installation of NI Labview Runtime may also be required - Accept this install.**



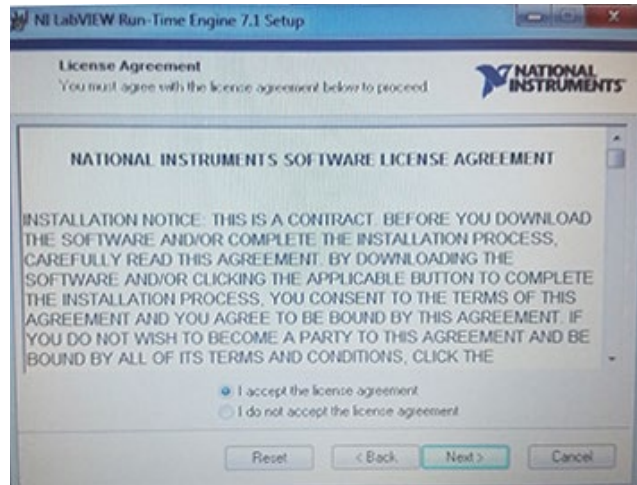
### Windows Security



### NI LabVIEW Run-Time



NI LabVIEW Run-Time License Agreement



6. Installation Complete screen



### Connect Cleco® TULMan™ using a micro USB cable:



### Starting the Program

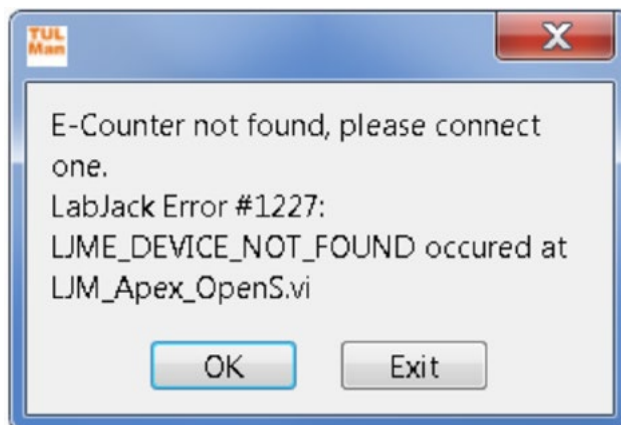
1. Connect the Cleco® TULMan™ to a computer using a USB-Micro USB cable.
2. Open the Cleco® TULMan™ software.

The connection error, shown to the right, will appear if the software fails to detect the Cleco® TULMan™. This can be caused by one of the following conditions:

- Opening the software prior to connecting the Cleco® TULMan™ to the computer
- Damaged USB-Micro USB cable
- Cleco® TULMan™ driver not installed

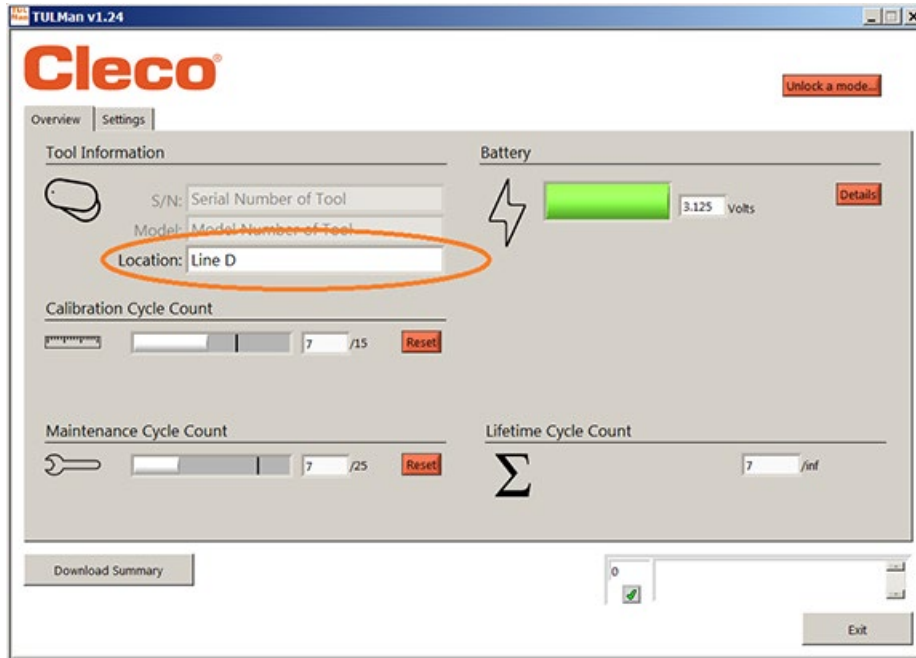
The error message will disappear after connection between the Cleco® TULMan™ and the computer has been established.

Click OK

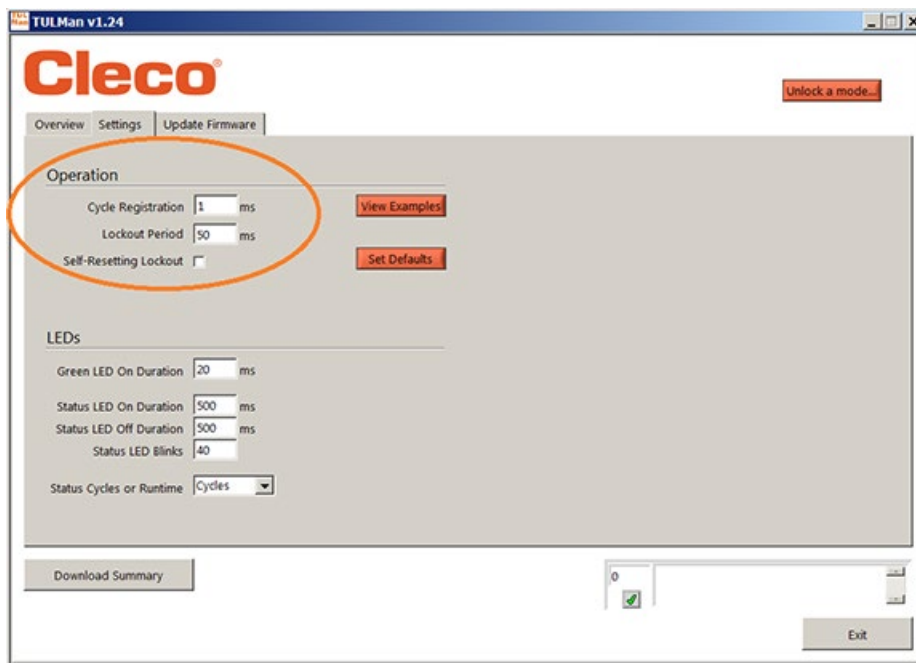


- 3. Click OK and you can view the data on the counter.

Overview Tab



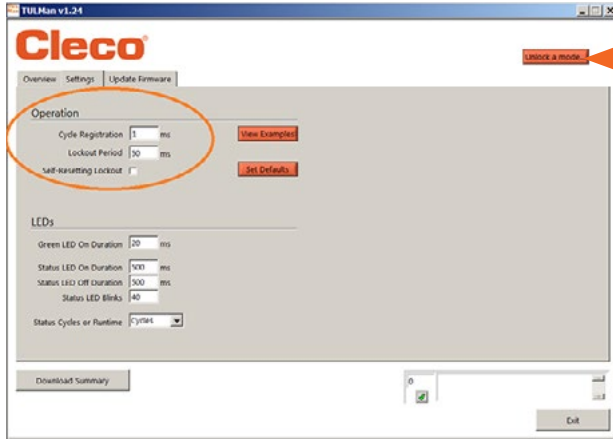
Settings Tab





4. Unlock a Mode

On the settings tab you can unlock one of the 3 modes.



**Note:** There are 2 additional modes for factory use only; Advanced and Factory.

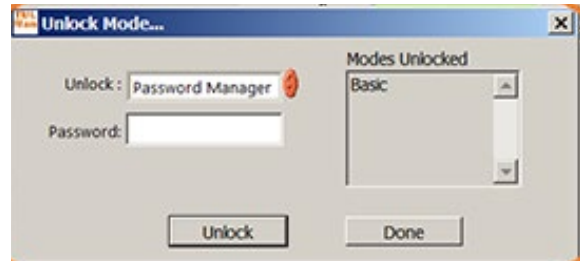
Tool Room - Default PW - Tool



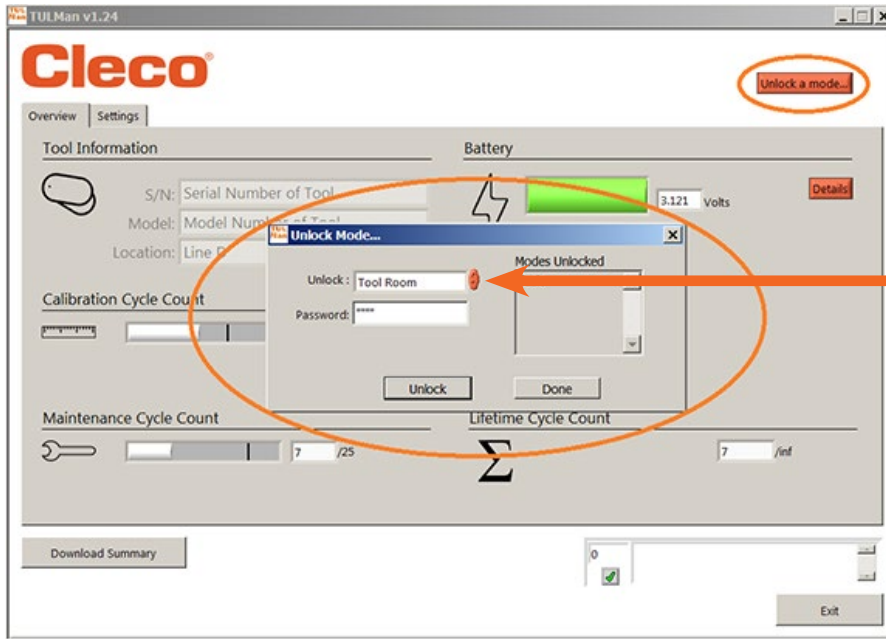
Programming - Default PW - Programming



Password Manager - Default - Password



### 5. Password Mode



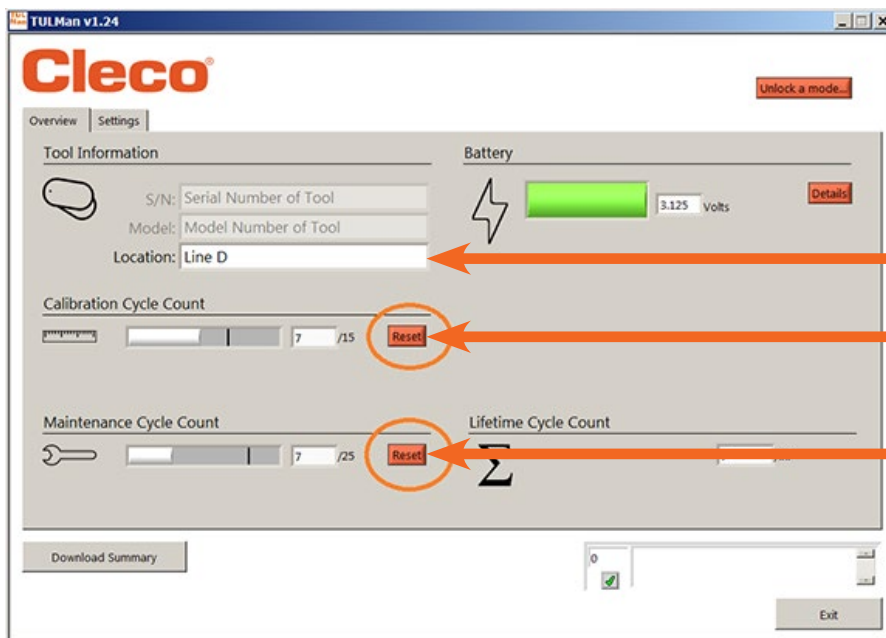
Allows Passwords to be changed for:

- Password Manager
- Tool Room
- Programming

**IMPORTANT:** Maintain a record of the passwords set. If a password is forgotten it is **NOT** possible to recover.

**Note:** The passwords can not be changed for the factory use only modes; Advanced and Factory.

### 6. Tool Room Mode

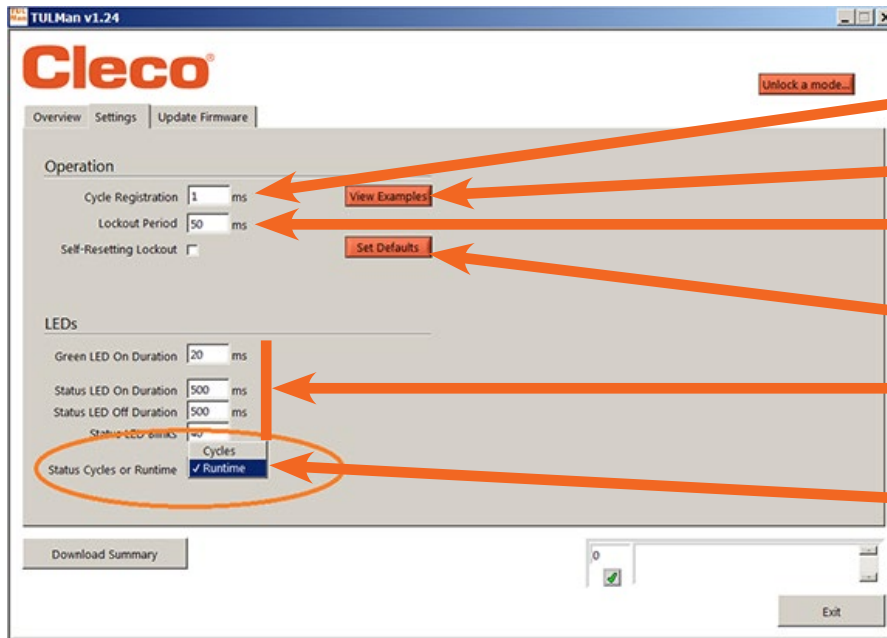


Allows tool location to be changed

Allows Calibration Cycle/Run Time Count to be reset

Allows Maintenance Cycle/Run Time Count to be reset

## 7. Programming Mode - Settings



Set minimum time for a cycle

See examples of cycle setting

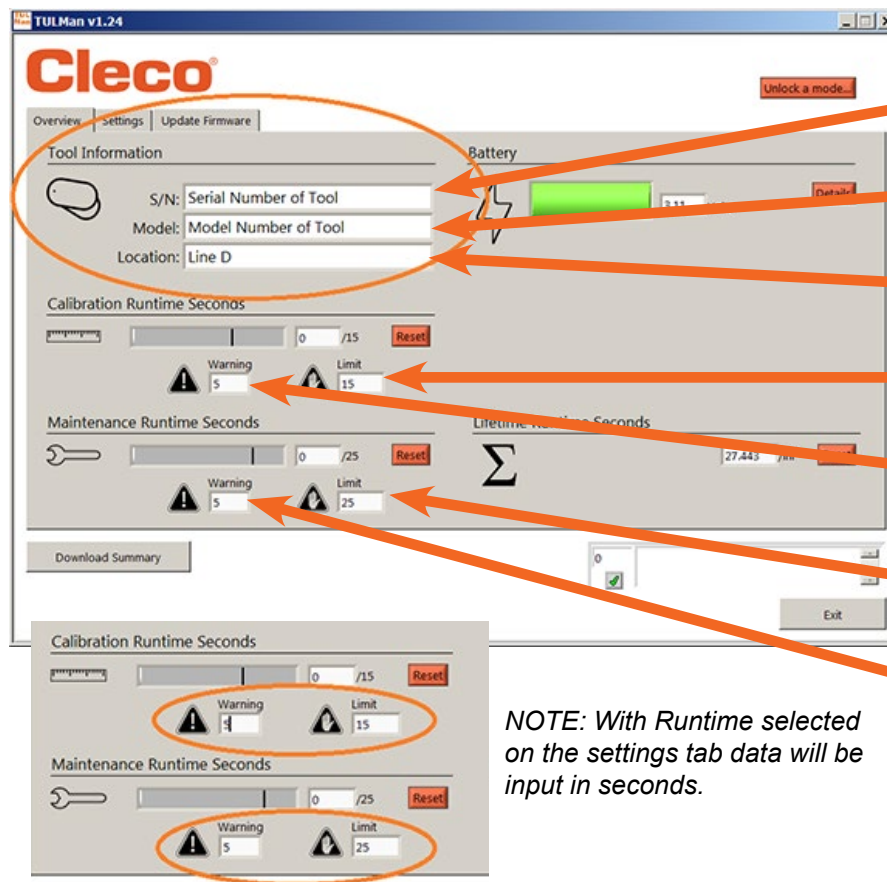
Set minimum time between cycles

Reset to factory defaults

Set LED behaviour  
*NOTE: Keeping LED's on for too long can reduce battery life.*

Set Count by Cycles or Runtime

## 8. Programming Mode - Overview



Set Serial Number of the tool that counter is mounted on

Set Model Number of the tool that counter is mounted on

Set Location in the plant tool is used

Set Limit for RED light for Calibration LED

Set Warning for YELLOW light for Calibration LED  
This is Cycles Remaining

Set Limit for RED light for Maintenance LED

Set Warning for YELLOW light for Maintenance LED  
This is Cycles Remaining

*NOTE: With Runtime selected on the settings tab data will be input in seconds.*

### 9. Quick Guide to Programming

On the settings tab select Cycle or Runtime.

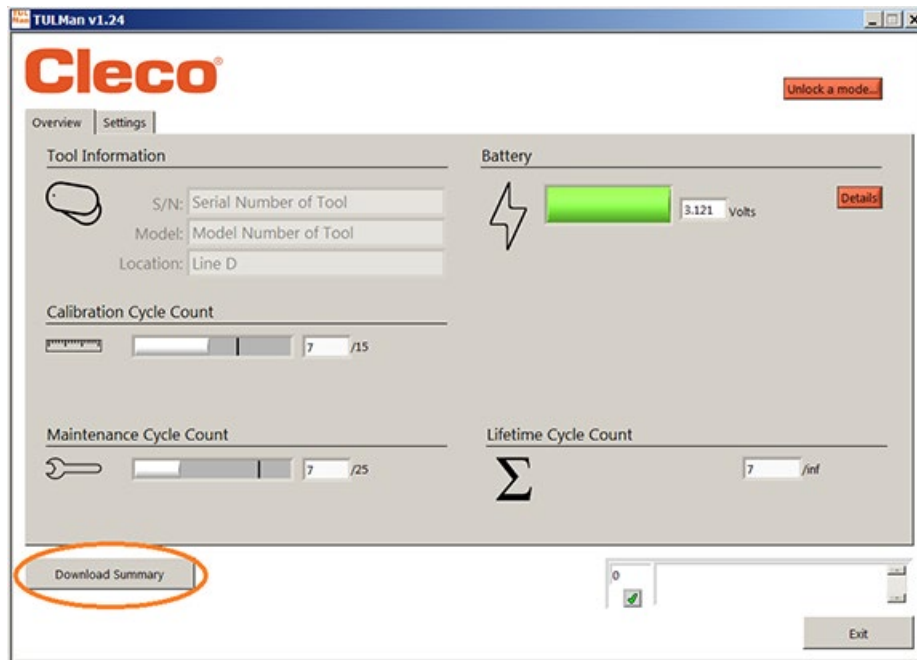
- Use Cycle for torque controlled Screwdrivers with clutches.
- Use Runtime for varying cycle time tools such as Drills or Sanders.

In Cycle mode additional settings can be used for a more accurate cycle count, these are NOT used with Runtime. Refer to the examples in the Software or in Appendix. Consult the tool manufacturer or use previous data to establish warnings and limits for the Calibration and Maintenance setting. It is recommended that the warning is at least one shift before the limit.

In Runtime mode time should be input in seconds. Consult the tool manufacturer or use previous data to establish warnings and limits for the Calibration and Maintenance setting. It is recommended that the warning is at least one shift before the limit. For hours to seconds conversion see Appendix Runtime Calculator.

### 10. File Download

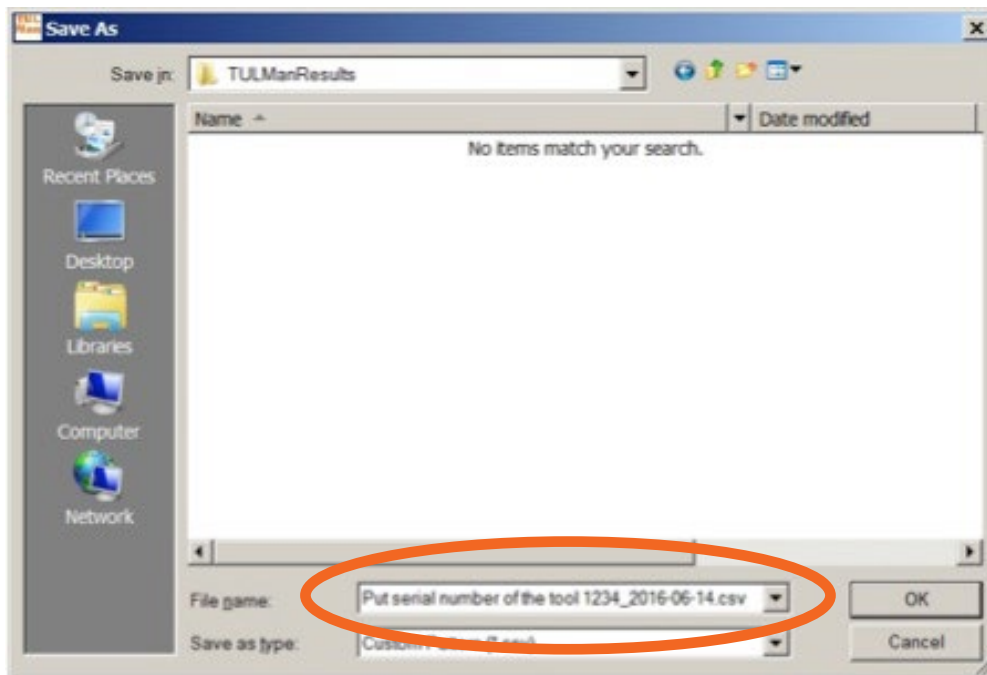
File download is allowed in any Mode. Click the Download Summary box on the Overview tab.



A dialog box will open to save the file with a default file name of:

Tool serial number\_year\_month\_day.csv

Select a location on your computer to save the .csv file. It is recommended that you create a folder specifically for the results files.



The csv file can be opened in Microsoft Excel either through file open, select file type .csv or locating the file in windows explore and double clicking the file.



The csv file contains all information for the counter for cycles and run time.

Tool Model No	Tool S/N	Tool Location	Apex ID	Electronics S/N	Date	Time		
Put the model number of the tool 19RAA	Put serial number of the tool 1234	Put Location in the plant	LJ ID_0003	224000003	6/14/2016	11:18:29		
Since Last Calibration	Limit LED D2 (red)	Warning LED D2 (yellow)	LED D2 Association	Runtime Counter A	Since Last Maintenance			
6	20	5	Runtime Counter A	19.184	6			
Limit LED D3 (red)	Warning LED D3 (yellow)	LED D3 Association	Runtime Counter B	Lifetime Cycles	Lifetime Runtime	Battery Voltage		
40	10	Runtime Counter B	19.184	24	62.584	3.087		
Cycle Registration Period	Lockout Period	Self-Reset Lockout?	Cycle Counter C	Runtime Counter C	Cycle Counter D (Factory)	Runtime Counter D (Factory)	Oscillator interruptions	Status LEDs Cyc or RT
1	50	Disabled	1092	967.588	1092	967.588	1	Runtime

Counter A = Calibration Counter, LED 2  
Counters C and D are Factory Use Only

Counter B = Maintenance Counter, LED 3

*Blank Page*

## **Appendices**

- Appendix 1: Runtime Calculator
- Appendix 2: Cycle Count Examples
- Appendix 3: End User License Agreement

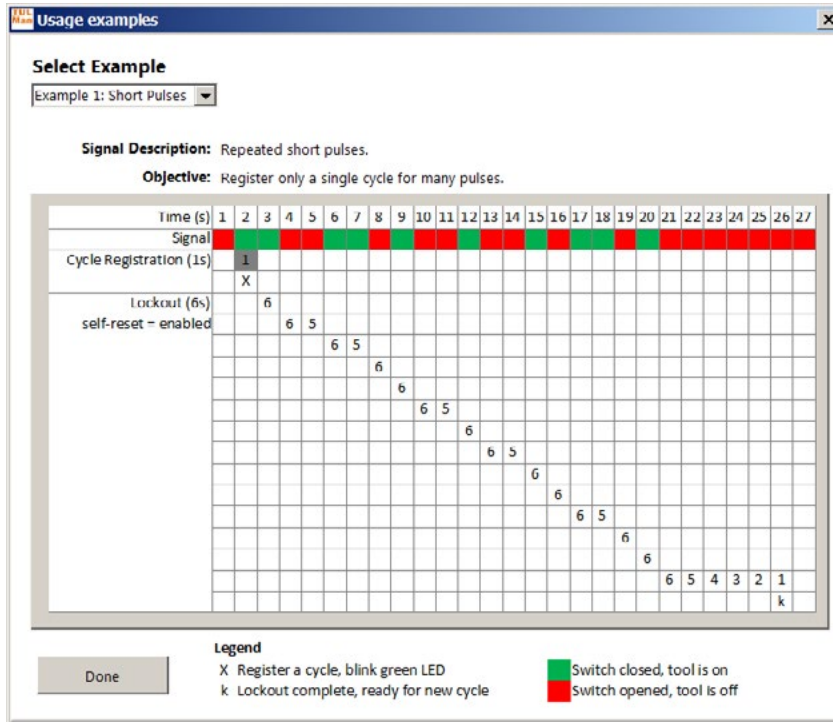
## Appendix 1: Runtime Calculator

Hours	Seconds
1	3600
8	28800
16	57600
24	86400
50	180000
100	360000
200	720000
300	1080000
500	1800000
1000	3600000

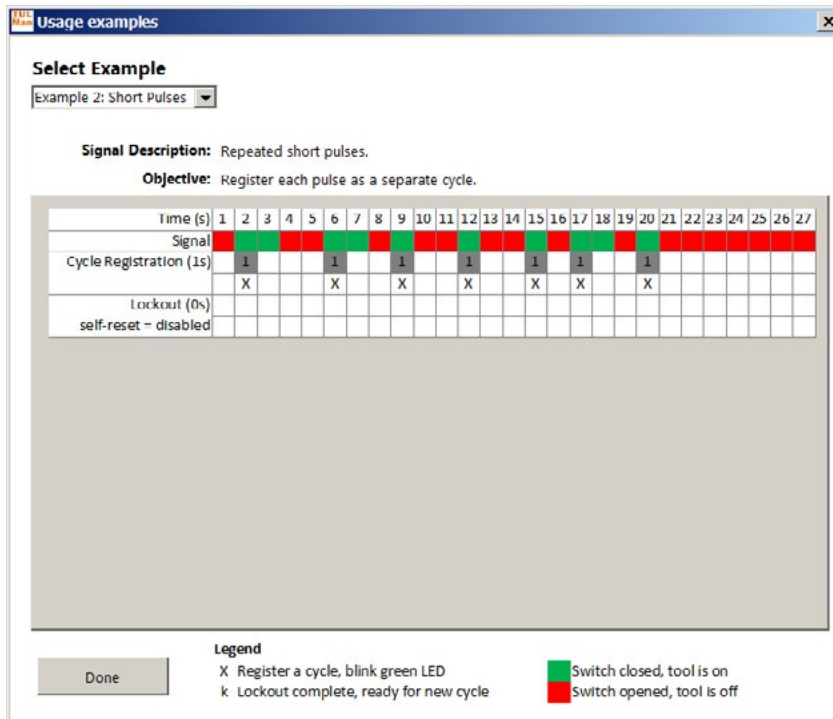


## Appendix 2: Cycle Count Examples

### Example 1: Short Pulses



### Example 2: Short Pulses



## Appendix 2: Cycle Count Examples (continued)

### Example 3: Varied Pulses

**Usage examples**

Select Example  
Example 3: Varied Pulses

**Signal Description:** Pulse duration varies.  
**Objective:** Register only the long pulses as cycles

Time (s)	1	2	3	4	5	6	7	8	9	10	11	12	13	14	15	16	17	18	19	20	21	22	23	24	25	26	27
Signal	1	2	3	4	5					1		1		1	2		1	2	3	4	5						
Cycle Registration (5s)		1	2	3	4	5					1			1	2		1	2	3	4	5						
Lockout (1s)							1			1			1			1						1					
self-reset = disabled							k			k			k			k						k					

Legend

- X Register a cycle, blink green LED
- k Lockout complete, ready for new cycle
- Switch closed, tool is on
- Switch opened, tool is off

Done

### Example 4: Varied Pulses

**Usage examples**

Select Example  
Example 4: Varied Pulses

**Signal Description:** Pulse duration varies.  
**Objective:** Register each pulse as a separate cycle.

Time (s)	1	2	3	4	5	6	7	8	9	10	11	12	13	14	15	16	17	18	19	20	21	22	23	24	25	26	27
Signal	1	2	3	4	5					1		1		1		1											
Cycle Registration (1s)		1							1		1		1		1												
Lockout (0s)		X							X		X		X		X												
self-reset = disabled																											

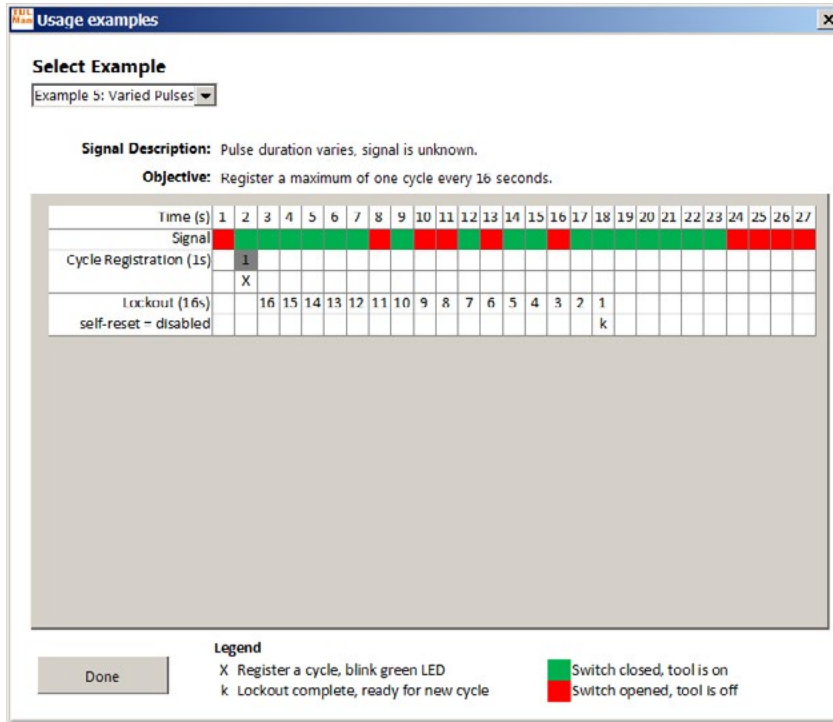
Legend

- X Register a cycle, blink green LED
- k Lockout complete, ready for new cycle
- Switch closed, tool is on
- Switch opened, tool is off

Done

## Appendix 2: Cycle Count Examples (continued)

### Example 5: Varied Pulses



## Appendix 3: End User License Agreement

### END USER LICENSE AGREEMENT

As used herein “Software Product” means a single copy of the “Cleco® TULMan™” software, and all accompanying files, images, data and materials received in conjunction with your order of this installation package (whether received concurrently or after your receipt of the initial package).

**Please read the following terms and conditions carefully before using this Software Product. Your use or installation of this copy of the Software Product indicates your acceptance of this End User License Agreement (the “Agreement”) and your understanding that you, and any business or organization that you represent, will be bound by these terms and conditions. If you do not agree to any of the terms of this Agreement, then do not install or use the Software Product.**

**LICENSE GRANT:** Provided you agree to and comply with all terms and conditions of this Agreement, Apex Tool Group LLC (“Apex”) grants you a personal non-transferable license to use this Software Product on a single computer that is owned or controlled by you. The licensed Software Product may be installed and used by only one person on only one computer. The Software Product may not be distributed or copied in any manner. The Software Product’s component parts may not be separated for use on more than one computer. This Software Product may not be shared or accessed through a network (unless a separate site license agreement is entered into with Apex). All components accompanying the software have copyright protection and/or are otherwise protected by the intellectual property rights of Apex and/or its affiliates and may not be taken apart, modified, used or published with other software. You agree that Apex and its affiliates may collect and use statistics on your use of the Software Product.

**NO RIGHT TO SUPPORT, SERVICE, & UPDATES:** Apex and its affiliates shall have no obligation to provide updates, support services, or maintenance for the Software Product. If Apex or its affiliates should ever choose to provide updates, services, maintenance, and/or licenses free of charge, Apex and its affiliates have no express or implied obligation to continue to provide any such products, services, or licenses and may, at its complete discretion, choose to begin to charge for or cease providing any such products, services, or licenses.

**DISCLAIMER OF WARRANTIES:** This Software Product, all accompanying files, data, and materials, and any future services or materials related thereto, are provided “AS IS” and with no warranties of any kind, whether express or implied. The user must assume all risk of using the Software Product. APEX AND ITS AFFILIATES HEREBY DISCLAIM ALL WARRANTIES AND CONDITIONS, EITHER EXPRESS OR IMPLIED OR STATUTORY, AND MAKE NO REPRESENTATIONS OR WARRANTIES OF MERCHANTABILITY, FITNESS FOR A PARTICULAR PURPOSE, ACCURACY, COMPLETENESS, OR NON-INFRINGEMENT. This disclaimer of warranty constitutes an essential part of this Agreement.

**LIMITATION OF LIABILITY:** Any liability of Apex and its affiliates will be limited exclusively to refund of purchase price. In addition, to the maximum extent permitted by applicable law, in no event shall Apex or its principals, shareholders, officers, employees, contractors, or affiliates, be liable for any incidental, consequential, indirect, special, punitive, or any other damages whatsoever relating to the use of Software Product or any accompanying materials, updates, or services.

**END USER LICENSE AGREEMENT (continued)**

**INDEMNITIES AND OTHER LIMITATIONS ON USE:** In no event does Apex authorize you to use this Software Product in applications or systems where Software Product's failure to perform can reasonably be expected to result in a physical injury or loss of life. Any such use by you is entirely at your own risk, and you agree to defend, indemnify, and hold harmless Apex and its affiliates from any allegations, claims, or losses relating to such unauthorized use.

This Software Product and all services provided may be used for lawful purposes only. Transmission, storage, or presentation of any information, data or material in violation of any country, state or city law is strictly prohibited. This includes, but is not limited to: copyrighted material, material we judge to be threatening or obscene, or material protected by trade secret and other statute. You agree to defend, indemnify, and hold harmless Apex and its affiliates from any allegations, claims, or losses resulting from your use of this Software Product.

**INTELLECTUAL PROPERTY RIGHTS:** Apex and/or its affiliates are the exclusive owners of the copyright of this Software Product and accompanying materials and any other intellectual property rights therein, including any derivatives and improvements related thereto. All rights of any kind, which are not expressly granted in this Agreement, are entirely and exclusively reserved to and by Apex. You may not modify, translate, reverse engineer, de-compile, disassemble, or create derivative works based on this Software Product. You may not make access to Software Product available to others in connection with a service bureau, application service provider, or similar business. There are no third party beneficiaries of any promises, obligations or representations made by Apex herein. This Agreement does not grant any rights in connection with any trademarks or patents of Apex and/or its affiliates. You may not disclose to other persons any data or techniques relating to this Software Product that are acquired through de-compiling or reverse engineering or through other inappropriate or unauthorized means, or that you know or should know are trade secrets of Apex or its affiliates. Failure of Apex to exercise or enforce any intellectual property right or provision of this Agreement shall not constitute a waiver of such right or provision.

**AUDIT RIGHTS:** Upon written notice to you, Apex may conduct an independent audit of your records and computing devices to determine your compliance with this Agreement and your payment of license fees (if any).

**TERMINATION:** Without prejudice to any other rights, Apex may terminate this Agreement if you, or any business or organization with which you are associated, fails to comply with the terms and conditions of this Agreement. In such event, you must destroy all copies of the Software Product and any component parts. Upon any attempt by you to transfer the Software Product, your license is automatically terminated and you are no longer permitted to use the Software Product.

**ENTIRE AGREEMENT:** This Agreement constitutes the complete understanding between the parties on the subject matter, and merges and supersedes all other or prior understandings, purchase orders, agreements, and arrangements.

**APPLICABLE LAW AND VENUE:** This Agreement shall be governed by the laws of the State of Maryland in the United States, without regard to the conflict of laws provisions thereof. Each party irrevocably submits to the exclusive jurisdiction and venue of the federal and state courts located in the County of Baltimore in Maryland in any legal suit, action, or proceeding arising out of or based upon this Agreement or the Software Product.

## Safety

### Personal Protective Equipment

The electronic counter is an add-on accessory for small pneumatic tools. Wear proper personal protective equipment required for operation the pneumatic tool which the electronic counter is connected to.

### Designated Use

The electronic counter is designed exclusively to be used with small pneumatic tools.

- Do not modify the circuit board
- Do not modify the electronic counter assembly

### Operating Condition

Maximum Pressure: 100 Psi (700 Kpa)

Operating and storage temperature:

-22°F to 140°F (-30°C to 60°C)

### Battery

- CR1632 battery only
- Do not recharge

### Product Description

- Electronic counter
- E-Counter
- Cleco® TULMan™ Device
- Counter

### Counter Assembly



### Tool Integration

The electronic counter can be easily integrated to common small pneumatic tools. Other than adaptations designed for a specific tool, the following configurations are also available.

#### Tool Air Inlet Thread:

The Cleco® TULMan™ thread is 1/4" NPT. To connect to other thread sizes use either a solid adapter or a whip hose adapter.

Connection Method: Whip Hose



Connection Method: Pipe Nipple

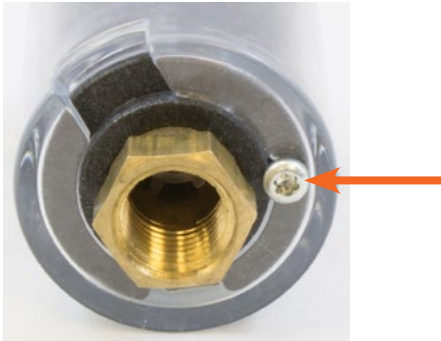


### Connect to Computer

The counter can be connected to a computer using the micro-USB port built into the counter circuit board. Refer to the Software User's Instructions in this manual for details regarding the software interface. Following are the steps required for connection.

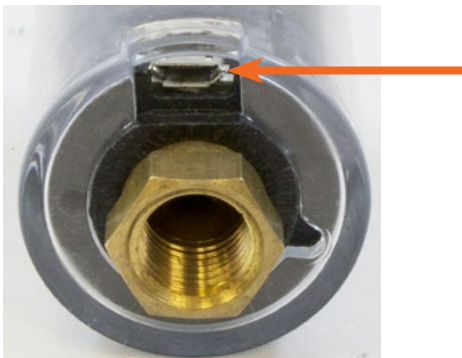
**Step 1:**

Remove the screw securing the counter cover.



**Step 2:**

Rotate the cover to expose the micro-USB port.



**Step 3:**

Connect the micro-USB cable to the counter.

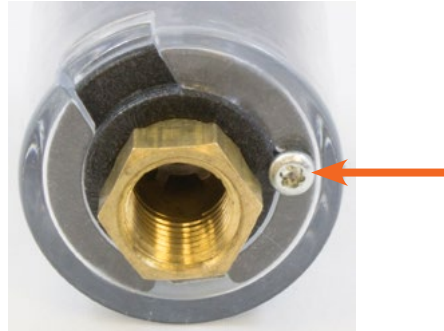


### Battery Replacement

Battery life can be monitored using the software. Refer to the Software User's Instructions in this manual. Following are the steps required to replace the battery.

**Step 1:**

Remove the screw securing the counter cover.



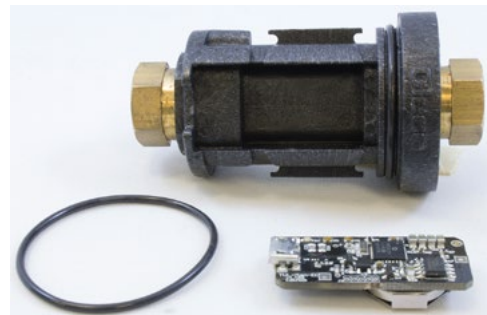
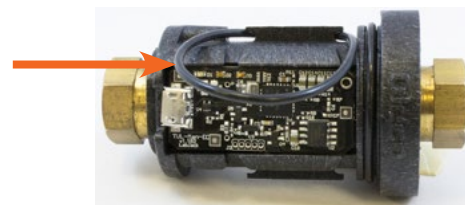
**Step 2:**

Remove the counter cover.



**Step 3:**

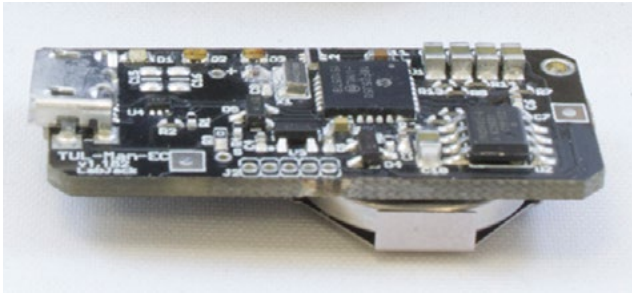
The circuit board is held down by an O-Ring. Slide the O-Ring away from the circuit board.



## Battery Replacement (continued)

### Step 4:

Remove the circuit board from the counter body.



### Step 5:

Replace the battery as shown.



### Step 6:

Reverse the previous steps to reassemble the counter.



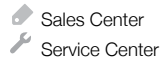






# POWER TOOLS SALES & SERVICE CENTERS

Please note that all locations may not service all products.  
Contact the nearest Apex Tool Group Sales & Service Center for the appropriate facility to handle your service requirements.



## NORTH AMERICA | SOUTH AMERICA

**Detroit, Michigan**    
Apex Tool Group  
2630 Superior Court  
Auburn Hills, MI 48236  
Phone: +1 (248) 393-5640  
Fax: +1 (248) 391-6295

**Lexington, South Carolina**   
Apex Tool Group  
670 Industrial Drive  
Lexington, SC 29072  
Phone: +1 (800) 845-5629  
Phone: +1 (919) 387-0099  
Fax: +1 (803) 358-7681

**Canada**    
Apex Tool Canada, Ltd.  
7631 Bath Road  
Mississauga, Ontario L4T 3T1  
Canada  
Phone: (866) 691-6212  
Fax: (905) 673-4400



**Mexico**    
Apex Tool Group  
Manufacturing México  
S. de R.L. de C.V.  
Vialidad El Pueblito #103  
Parque Industrial Querétaro  
Querétaro, QRO 76220  
Mexico  
Phone: +52 (442) 211 3800  
Fax: +52 (800) 685 5560

**Brazil**    
Apex Tool Group  
Ind. Com. Ferram, Ltda.  
Av. Liberdade, 4055  
Zona Industrial Iporanga  
Sorocaba, São Paulo  
CEP# 18087-170  
Brazil  
Phone: +55 15 3238 3820  
Fax: +55 15 3238 3938

## EUROPE | MIDDLE EAST | AFRICA

**England**    
Apex Tool Group GmbH  
C/O Spline Gauges  
Piccadilly, Tamworth  
Staffordshire B78 2ER  
United Kingdom  
Phone: +44 1827 8727 71  
Fax: +44 1827 8741 28

**France**    
Apex Tool Group S.A.S.  
25 rue Maurice Chevalier  
B.P. 28  
77831 Ozoir-La-Ferrière  
Cedex, France  
Phone: +33 1 64 43 22 00  
Fax: +33 1 64 43 17 17

**Germany**    
Apex Tool Group GmbH  
Industriestraße 1  
73463 Westhausen  
Germany  
Phone: +49 (0) 73 63 81 0  
Fax: +49 (0) 73 63 81 222

**Hungary**    
Apex Tool Group  
Hungária Kft.  
Platánfa u. 2  
9027 Győr  
Hungary  
Phone: +36 96 66 1383  
Fax: +36 96 66 1135

## ASIA PACIFIC

**Australia**   
Apex Tool Group  
519 Nurgong Street, Albury  
NSW 2640  
Australia  
Phone: +61 2 6058 0300

**China**    
Apex Power Tool Trading  
(Shanghai) Co., Ltd  
2nd Floor, Area C  
177 Bi Bo Road  
Pu Dong New Area, Shanghai  
China 201203 P.R.C.  
Phone: +86 21 60880320  
Fax: +86 21 60880298

**India**    
Apex Power Tools India  
Private Limited  
Gala No. 1, Plot No. 5  
S. No. 234, 235 & 245  
Indialand Global  
Industrial Park  
Taluka-Mulsi, Phase I  
Hinjawadi, Pune 411057  
Maharashtra, India  
Phone: +91 020 66761111

**Japan**    
Apex Tool Group Japan  
Korin-Kaikan 5F,  
3-6-23 Shibakoen, Minato-Ku,  
Tokyo 105-0011, JAPAN  
Phone: +81-3-6450-1840  
Fax: +81-3-6450-1841

**Korea**   
Apex Tool Group Korea  
#1503, Hibrand Living Bldg.,  
215 Yangjae-dong,  
Seocho-gu, Seoul 137-924,  
Korea  
Phone: +82-2-2155-0250  
Fax: +82-2-2155-0252



**Apex Tool Group, LLC**  
1000 Lufkin Road  
Apex, NC 27539  
Phone: +1 (919) 387-0099  
Fax: +1 (919) 387-2614  
[www.apexpowertools.com](http://www.apexpowertools.com)